



## Aluminum Frame Base Systems

- High quality anodized aluminum base systems
- Structurally rigid construction using 50mm x 50mm or 30mm x 30mm tube extrusion
- Finishes identical to aluminum frame door program
- Easy attachment to casework or countertops using screws, brackets or double sided tape
- All base systems are produced to our customers' exact specifications with a +/- 1/32" tolerance using specialized manufacturing equipment
- Simple assembly (arrives fully or partially assembled)
- All required assembly tools ship with base systems
- Numerous configurations available
- No minimum order quantities
- Quick lead times
- Proudly made in the USA





BS002, brushed stainless steel finish. Image courtesy of Belmont Cabinetry.

Element Designs' aluminum frame base systems add modern appeal to kitchen, bath, closet and furniture applications. The simple, yet functional extruded profile provides functional and durable support to casework designs while maintaining a streamlined appearance ideal for modern, contemporary and transitional interiors. Aluminum frame base systems are available in five finishes (natural aluminum, brushed stainless, white, black and oil rubbed bronze) to match the aluminum frame door program and coordinate with most interior finishes. The high quality extruded or powder coated finishes provide exceptional durability to last a lifetime.



Kitchen island: BS001, brushed stainless finish with integrated stainless steel shelves and casters. Image courtesy of Kettler.



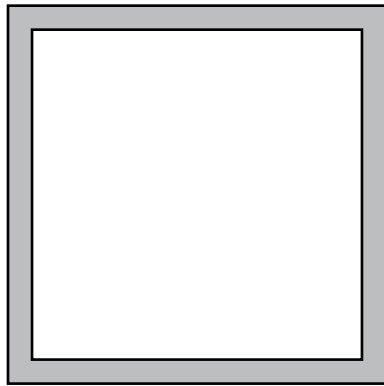
BS002 profile, white powdercoated finish

Aluminum frame base systems are available in 50mm or 30mm square tubing extrusion ideal for both small and large scale pieces. The basic configurations are suited for a variety of applications including kitchen islands, cabinet bases, vanity bases, countertop supports, table bases and more. The base systems arrive partially or fully assembled and are easy to install using assembly tools included with each order. All aluminum frame base systems come with leveling feet or high quality, locking casters for added versatility.

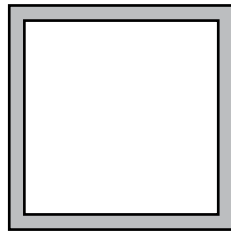


BS001, brushed stainless finish. Image courtesy of Bishop Cabinets.

## Profile Options



BS001 (50mm)



BS002 (30mm)



## Finish Options

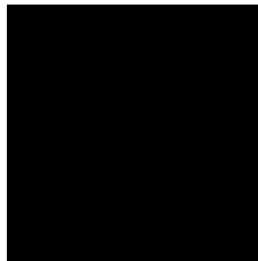
\_\_\_\_\_ Anodized Aluminum \_\_\_\_\_



natural aluminum

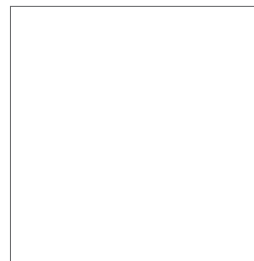


brushed stainless



black

\_\_\_\_\_ Powder Coat \_\_\_\_\_

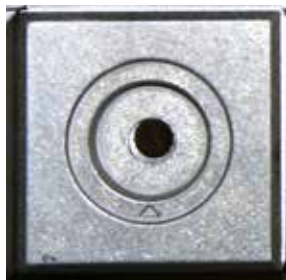


white



oil rubbed bronze

## Support Options



End Cap  
2" square metal base



Leveling Foot  
2" diameter metal base with clear plastic  
floor protector, up to 2" of adjustability



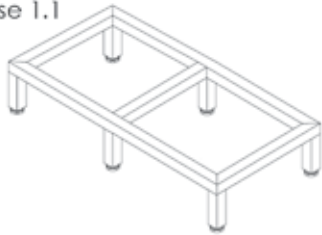
Caster\*  
Wheel caster with brake,  
2 3/8" diameter non-marking nylon wheels  
\* Only available with BS001

## System Configurations

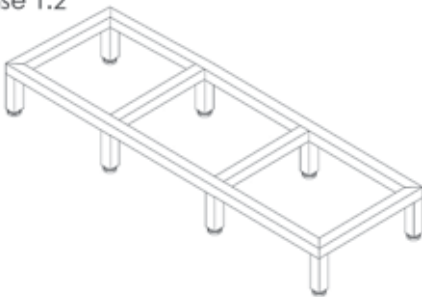
Base 1.0



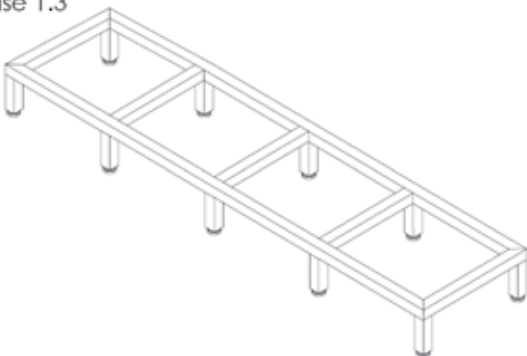
Base 1.1



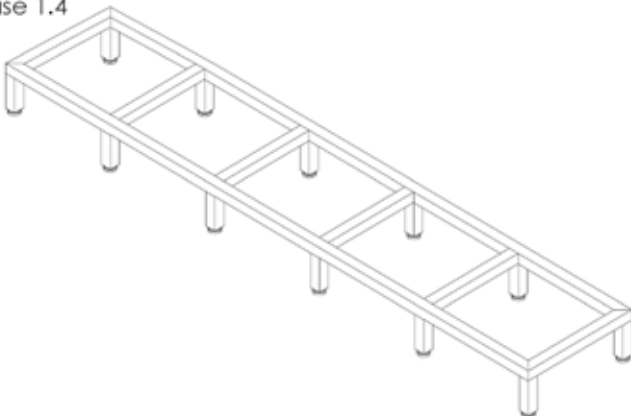
Base 1.2



Base 1.3



Base 1.4



### Design Guidelines:

System Code	MAX height	MAX depth	MAX width
1.0	16"	48"	48"
1.1	16"	48"	72"
1.2	16"	48"	96"
1.3	16"	48"	108"
1.4	16"	48"	120"
2.0	48"	48"	48"
2.1	48"	48"	72"

### Minimum height for all systems is 6"

Base System components are designed to support static loads from furniture casework or serve as a stationary support for tables and islands, unless finished with a caster. Any other applications, including furniture chairs, would not be recommended and void all warranty.

Custom configurations available, please submit drawings to Element Designs for review.

Base 2.0



Base 2.1

