



°eluma LED Shelving

- Patented lighting technology
- All panels are produced to our customers' exact specifications with a +/- 1/32" tolerance using specialized manufacturing equipment
- Environmentally friendly and energy efficient LED technology
- High quality 50,000 hour useful life LEDs (11.5 years at 12 hours/day)
- No heat or UV emissions: safe for use with cosmetics, food and beverages
- Fully adjustable in cabinet when used as shelf with adjustable components
- Simple installation: no hard wiring necessary
- Installed using standard shelf mounting hardware
- Weight capacity up to 75 lb/sf with tempered etched glass
- No minimum order quantities
- Short lead times
- ETL listed for US and Canada
- Proudly made in the USA





EL001, natural aluminum finish with 1/4" etch glass, warm LED

°eluma aluminum frame LED shelving is a patented product developed by Element Designs in conjunction with Tresco Lighting. The patented technology enables full height adjustability, which has been virtually impossible with existing illuminated shelves on the market. °eluma is the first and only light panel to combine the latest technology with superior design, complete flexibility, full customization and quick lead times for a vast array of applications.

°eluma inspires dramatic yet functional design in hospitality environments. Both new construction and simple retrofits are easily accomplished because °eluma is a fully custom product. The LEDs emit zero UV rays and generate virtually no heat in the °eluma system making it the ideal product for the food & beverage industry. Tempered glass allows for a significant load capacity per shelf.

Powered by:





EL001, brushed stainless finish with 1/4" etch glass, RGB LED



EL001, brushed stainless finish with 1/4" etch glass, warm LED.

°eluma used as accent illuminated shelving adds an innovative design element to kitchen environments. With the growing popularity of open shelving, glass door fronts, and exposed cabinetry, °eluma shelving is an ideal way to differentiate your kitchen design through the combination of technology, design and function. °eluma shelving can be used as cabinet interior shelving, cantilevered shelving and even cabinet bottoms which double as soft task lighting. The variety of profile finish options including natural aluminum, brushed stainless, black, white and oil rubbed bronze, blend with traditional, transitional and contemporary kitchen designs making °eluma seamless to its surroundings.

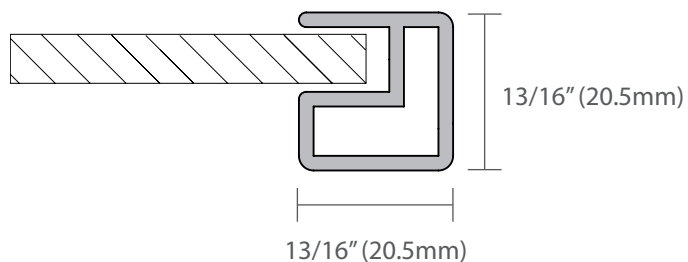


EL001, natural aluminum finish with 1/4" etch glass, daylight LED

°eluma aluminum frame LED panels effectively and efficiently highlight products in retail environments. °eluma is designed for adjustable or fixed shelving which gives the retailer the ability to easily reconfigure the panels for current products without additional costs. °eluma is safe for displaying electronics, pharmaceuticals, cosmetics and perishables because it emits no UV light and negligible heat. Element Designs' LED panels are a cost effective and energy efficient way to draw attention to your target revenue generating products. The long life span of the high quality LEDs used in °eluma provide additional cost savings to your retail designs by reducing maintenance costs over the life of the product.



Image courtesy of Elmwood Fine Custom Cabinetry



EL001

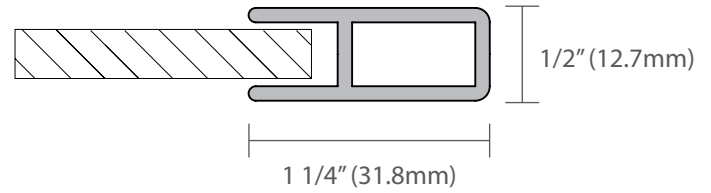
Design Guidelines:

- Minimum width / length = 5" (127 mm)
- Maximum width / length = 111" (2819.4 mm)
- 1/16" lines maximum standard depth = 18" (457.2 mm)
- 1/4" lines maximum standard depth = 15" (381mm)
- Maximum oversized depth / height = 36" (914.4 mm) with 1/16" lines or 30" (762 mm) with 1/4" lines (LEDs located along two sides)
- 1/4" tempered safety glass has a weight bearing capacity of approximately 75 lbs per square foot
- °eluma shelves can be mounted with standard shelf support methods
- **Intermediate shelf supports recommended for shelves over 30"**



Image courtesy of Creative Closets

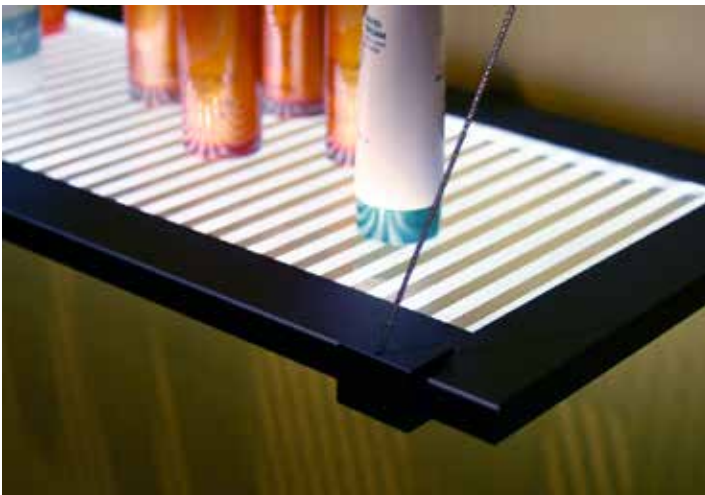




EL002

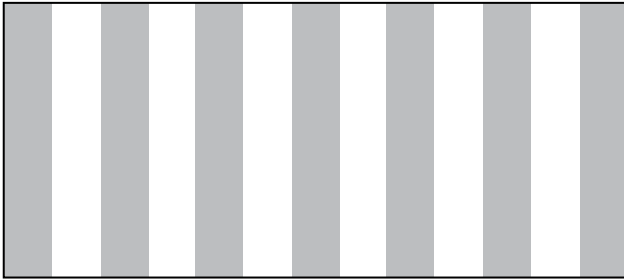
Design Guidelines:

- Minimum width / length = 5" (127 mm)
- Maximum width / length = 111" (2819.4 mm)
- 1/16" lines maximum standard depth = 18" (457.2 mm)
- 1/4" lines maximum standard depth = 15" (381mm)
- Maximum oversized depth / height = 36" (914.4 mm) with 1/16" lines or 30" (762 mm) with 1/4" lines (LEDs located along two sides)
- 1/4" tempered safety glass has a weight bearing capacity of approximately 75 lbs per square foot
- Element Designs offers cable mounting shelf systems for shelves up to 16" deep (only available for EL002)
- °eluma shelves can be mounted with standard shelf support methods.
- **Intermediate shelf shelf supports recommended for shelves over 30"**



Insert Etch Pattern Options

1/4" Tempered Safety Glass



1/4" illuminated etched lines at 1/4" spacing



1/16" illuminated etched lines at 1/4" spacing

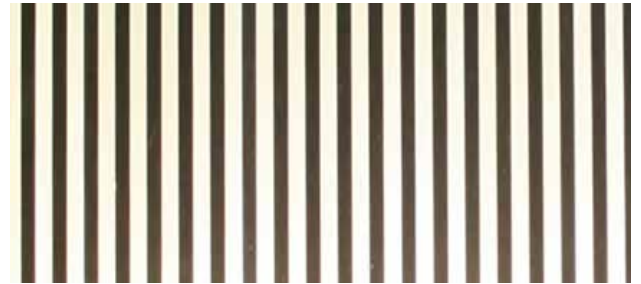


Linear Etch Pattern

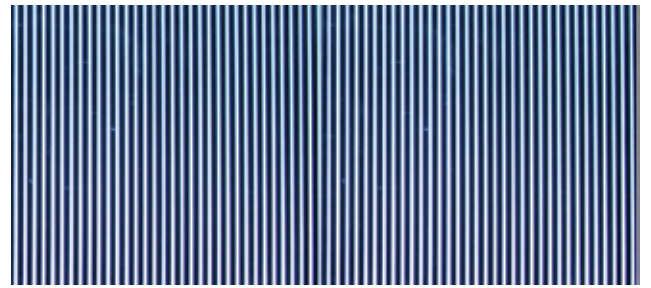
glass may contain minor imperfections which are inherent to the manufacturing process

LED Color Options

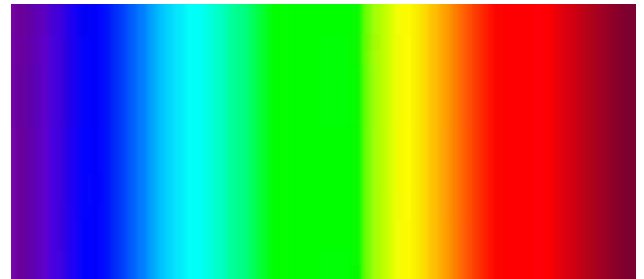
All LED color temperatures have a 50K hour useful life



warm (3500K)



daylight (6500K)



RGB (color changing LED)

Includes programmable RF remote with color, speed and dimming control

Profile Finishes

— Anodized Aluminum —



natural aluminum

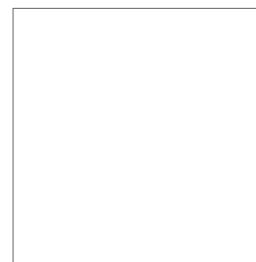


brushed stainless

— Powder Coat —



black



white



oil rubbed bronze

Wiring Components

Fixed Shelving



EL-LED-PKT-2M-BL
Direct Wire Extension
(REQUIRED - 1 per panel)

EL-EXT-2M-BL
Additional Extension Wire to LED-PKT-2M
(OPTIONAL - 1 per panel)

Adjustable Shelving



EL-MAG-ADP-RCA-N1
Magnetic Adapter (REQUIRED - 1 per panel)

EL-MAG-TR-1M
Magnetic Power Bar Track 1m (39") (REQUIRED)

EL-EXT-2M-BL
Additional Extension Wire to LED-PKT-2M
(REQUIRED - 1 per track)

Additional Components



EL-RGB Controller
Includes RF remote control with dimmer and multi color programming capabilities
(Required for RGB LEDs)



EL-DC-ELT60-CON
60W Transformer - REQUIRED
(Powers up to 20 LF of LEDs/ maximum 6 panels)



EL-DIMMER-12V
Includes two RF remote controls
(Optional Accessory)



EL-RDSW-2M-BL or EL-RDSW-2M-WH
Round rocker switch in black or white
(Optional Accessory)