

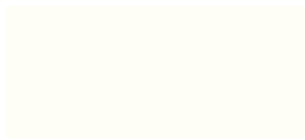


## dECOMatte Technical Manual

dECOMatte is a 12mm thin front solid surface that is made for cabinet door fronts, drawer fronts, counter tops and other vertical or horizontal applications. It is made of innovative FENIX material which is an ultra matte, anti-fingerprint, soft touch and completely opaque smart solid surface. dECOMatte is extremely durable and has thermal healing capabilities for superficial micro-scratches. Features incredibly low-light reflectivity and most notably dECOMatte itself has thermal healing capabilities for superficial micro-scratches.

### Colors

18 mm dECOLuxe Solid Acrylic is available as cut to size, finished & polished doors, panels, or drawer fronts



WHITE  
*(bianco kos)*



GREY  
*(grigio efeso)*



STONE  
*(grigio londra)*



BLACK  
*(nero ingo)*

Images may not be exact representations of solid surface color options. Contact Element Designs to obtain samples.

### Edgework Options

Straight Edge



1mm Radius



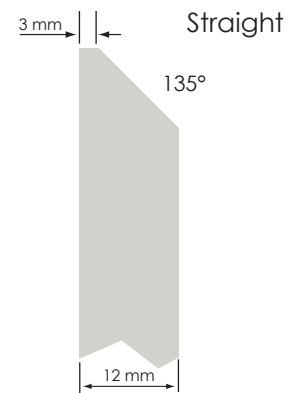
2mm Radius



3mm Radius



### Integrated Pull Option



- All edges, front and back have matte finish
- Functional and decorative hardware borings can be pre-drilled upon request.
- Any fabrication beyond basic hardware boring after delivery voids warranty.
- Straight edge option is slightly broken (approx. 0.5mm radius)
- Maximum panel/door size is 48" x 118"
- Can be used on vertical and horizontal surfaces
- Standard handle hole = 4.37mm (11/64")
- Handle location must be specified at time of order if Element Designs to fabricate
- Matching 1mm edgebanding available through Doellken
- Sheets and additional thicknesses available through Formica distributors

## Hinge Options

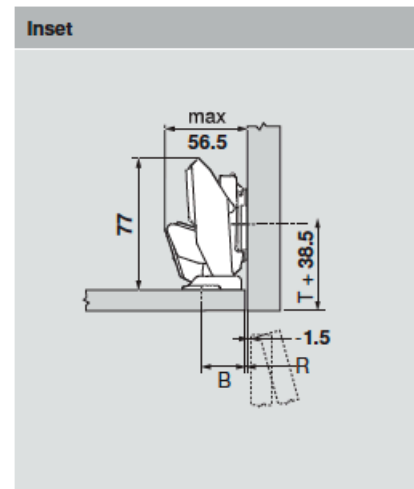
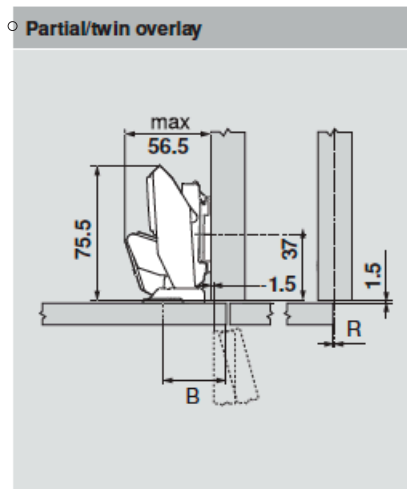
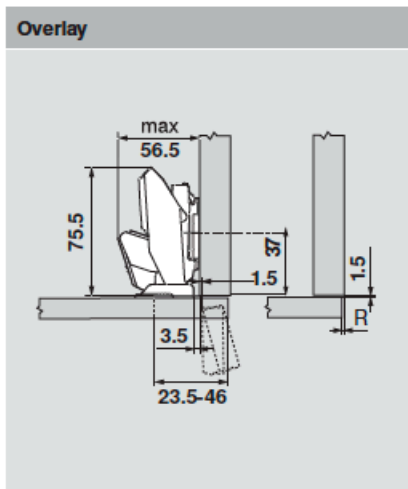
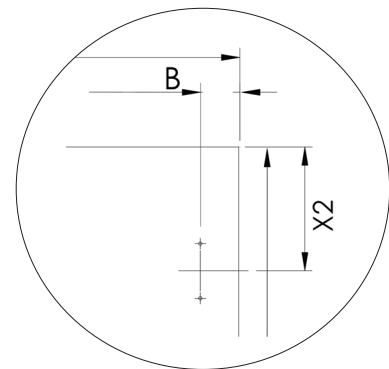
See Blum Thin-Front Solutions catalog for exact technical details and installation guidelines.



Hinges: CLIP top BLUMOTION (Soft Close) H71B453T  
 CLIP top (Self Close) H71T453T  
 CLIP top (Free Swing) H70T453T.TL

Hinge Plate: 0mm hinge plate

- B dimension: standard = 44mm (door edge to hole center)
- B minimum = 23.5, maximum = 46mm
- X2 dimension: standard = 90mm (3.5") from top and bottom of door to center of hole
- X2 minimum = 28 mm
- dowel hole diameter = 10mm



H	Overlay																	P	S		
0	1	2	3	4	5	6	7	8	9	10	11	12	13	14	15	16	17	18	19	-1.5	56.5
	28	29	30	31	32	33	34	35	36	37	38	39	40	41	42	43	44	45	46	Fixed distance = 27	
B = Boring distance																					

H	Inset reveal							P	S
0	3.5	3	2.5	2	1.5	1	0.5	-1.5	56.5
	23.5	24	24.5	25	25.5	26	26.5	Fixed distance = 27	
B = Boring distance									

**Attachment position/boring pattern**

B = Boring distance  
 OL = Overlay  
 B = OL + 27 (Fixed distance)

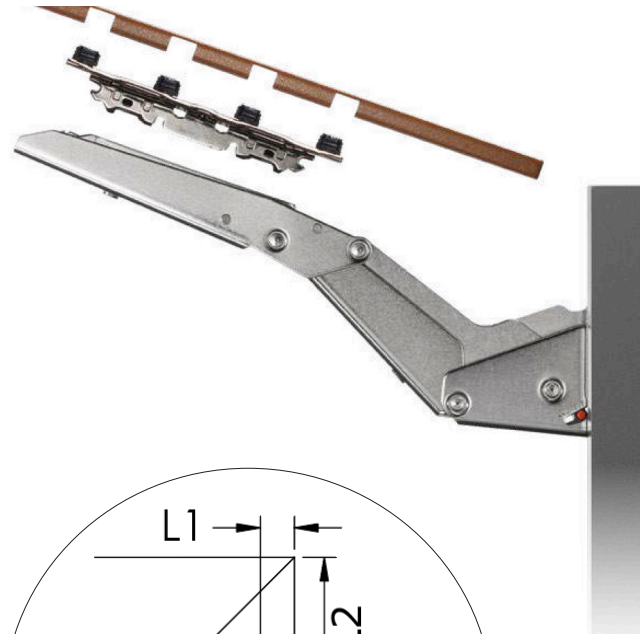
## AVENTOS Lift System Options

See Blum Thin-Front Solutions catalog for exact technical details and installation guidelines.

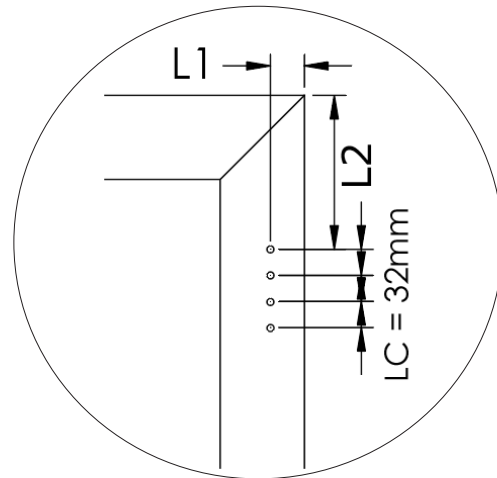
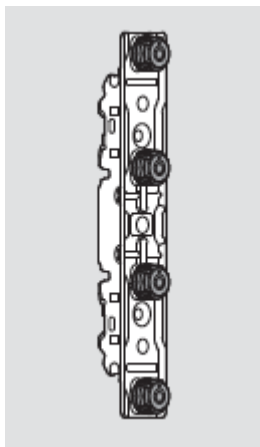
AVENTOS Systems compatible with dECOMatte

Thin Fronts:

- AVENTOS - HK-TOP
- AVENTOS - HK
- AVENTOS - HS
- AVENTOS - HL



AVENTOS Arm Assembly Mounting Plate 20S42T1



	HS	HL	HK	HK-TOP
<b>Area of Application</b>				
Tall wall cabinets	✓			
Medium wall cabinets	✓	✓	✓	
Small wall cabinets		✓	✓	✓
Above refrigerator cabinets			✓	✓
<b>Room Planning</b>				
Minimal top space requirement	✓		✓	✓
<b>Design</b>				
Cabinet height range	13 3/4" - 31 1/2"	11 13/16" - 22 13/16"	11 13/16" - 24"	7 3/8" - 15 3/4"
Cabinet width range	15" - 72"	15" - 72"	15" - 72"	15" - 39"



## CLEANING GUIDELINES

### TAKING CARE OF FENIX

If you look at FENIX through a microscope, you will see the structure that causes light to reflect at a variety of angles. This is what we recognize as a matt appearance.

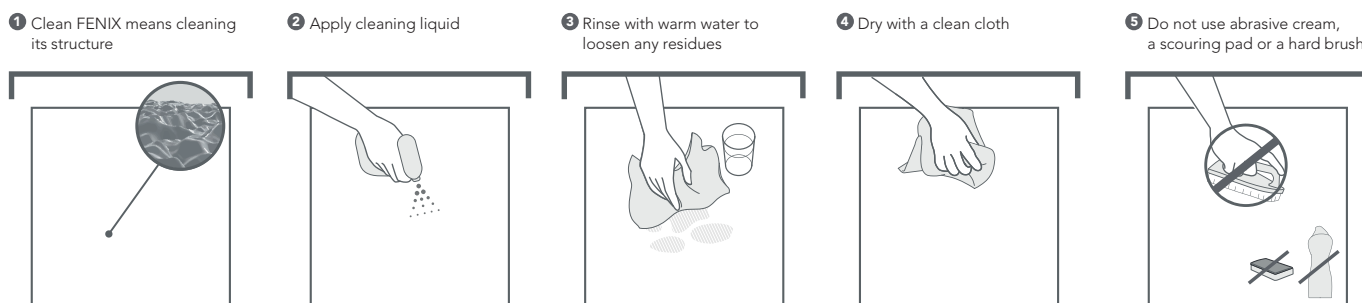
Taking care of FENIX means taking care of its structure. In this document you will find some simple but important guidelines. Regularly cleaning your FENIX surface in this way helps you to enjoy it for many years to come.

### EVERYDAY CLEANING AND REMOVAL OF STAINS

Usually warm water is highly effective. As FENIX is a strong material, you can also use any household cleaner, like all-purpose cleaners, disinfectants, degreasers or limescale removers. If needed, even acetone can be safely used (always follow the health and safety instructions on the bottle).

To avoid damaging the structure, don't scrub your FENIX surface with abrasive cream, a scouring pad or a hard brush. In the long term, doing this might lead to a glossy spot on your matt surface. Instead, you can use a melamine sponge - also known as a magic sponge.

As a final step, always rinse with plenty of warm water and wipe dry with a clean cloth. The water removes dirt, residues from cleaning liquids and particles of a melamine sponge, that could otherwise stay behind in the structure. The clean cloth absorbs water and therefore avoids limescale residues that may cause a change in appearance.



### DEEP CLEANING

If the surface has not been cleaned properly over time and you notice a change in appearance, you can follow the below procedure to deep clean FENIX surface.

#### Step 1

- Spray a kitchen degreaser on the entire surface.
- Use a clean cloth and warm water to loosen any residues, applying gentle friction.
- Rinse with plenty of warm water and dry with a clean cloth.

#### Step 2

- Spray a limescale removing liquid on the entire surface.
- Use a clean cloth and warm water to loosen any residues, applying gentle friction.
- Rinse with plenty of warm water and dry with a clean cloth.

#### Step 3

- Use a melamine sponge, make circle shaped movements to reach deep into the structure.
- Rinse with plenty of warm water and dry with a clean cloth.

If there is a remaining stain, you can use acetone locally (always follow the health and safety instructions on the bottle). Also after this step, it is recommendable to rinse well and dry.

**DISCLAIMER.** This document gives general recommendations on how to enhance a qualitative cleaning and maintenance of the products. This document serves as a general guide to good practice and constitutes no form of warranty or representation as to fitness for purpose in respect of the products and processes described in it. Any information or products contained within this document must be verified and tested for suitability by the user for his or her particular purpose or specific application. Consideration needs to be given to local or specific circumstances. The content of this document reflects our knowledge and experience at the time of publication. The newest version of the document replaces all previous versions. We advise that the newest version may contain technical changes that must be taken into account when using the products. The latest version of the document may be consulted on our website. Customers should always check whether an updated version of the document is available. Any warranty on the products may be voided if the (contents of the) latest version of this document, which may be updated from time to time, is not (properly) followed. We have made every effort to ensure the accuracy of the information in this document, but we cannot be held liable for any oversights, inaccuracies or typographical errors.