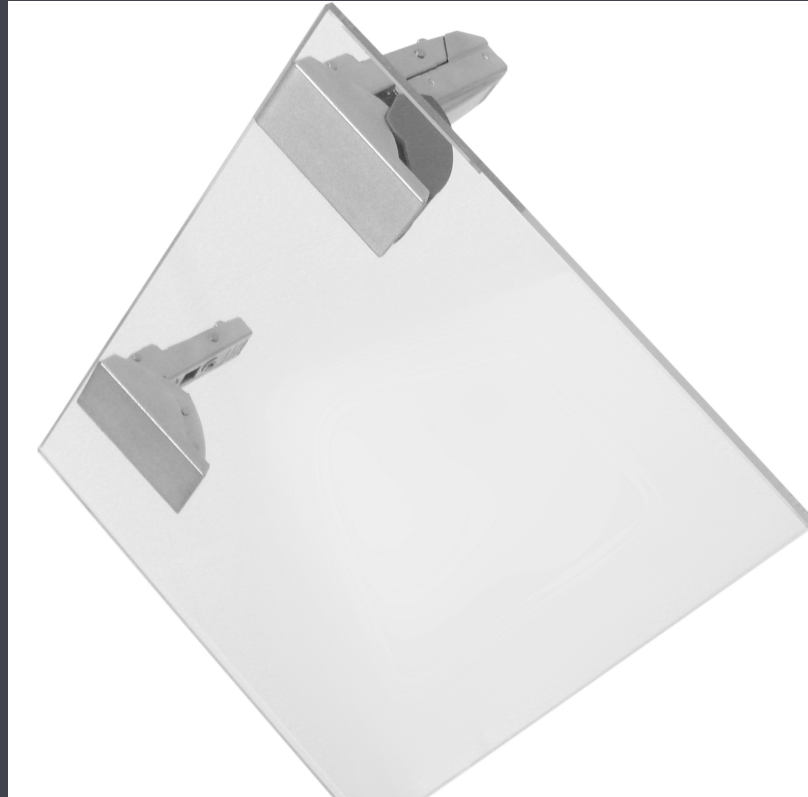
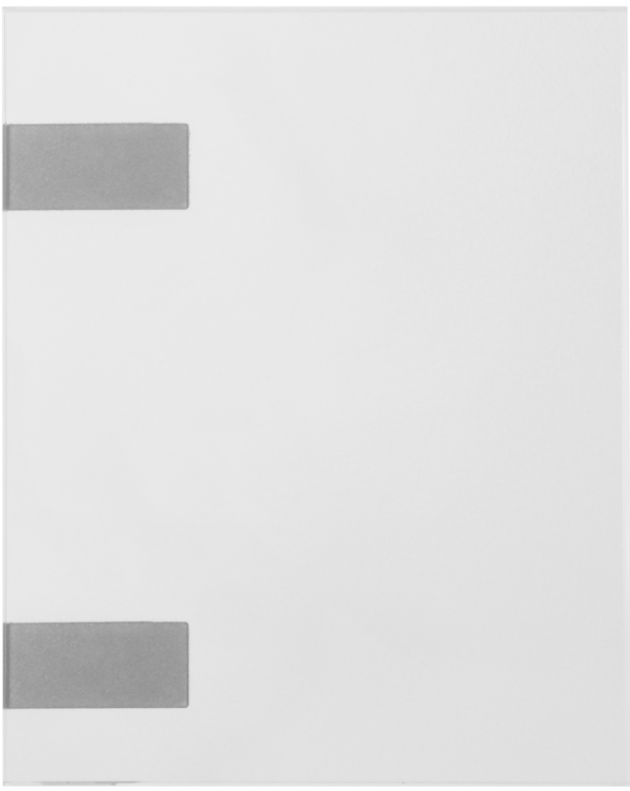




Frameless Glass Doors

Featuring CRISTALLO Hinges



Technical Manual

v2.19

Features and Benefits

Frameless glass doors by Element Designs are a clean, contemporary cabinetry or closet door solution. The doors are ideal in closet, commercial, retail, bathroom and kitchen applications, especially where full interior cabinet visibility is desired. The specially engineered glass door CRISTALLO hinges are pre-adhered to the glass by Element Designs and arrive ready to be installed as cabinet doors.

- Custom manufactured to 1/32"
- +/- 2mm tolerance
- 6mm (1/4") thick glass
- Flat polish edges
- Tempered glass for safety and durability
- Pre-installed CRISTALLO door plate
- Additional glass fabrication available
- Exclusive U.S. distributor of CRISTALLO hinges



Glass Options



low-iron
clear

low-iron
satin

clear

satin

grey
clear
(smoked)

bronze
clear

- Glass is 1/4" (6mm) thick
- Etched side facing out for all satin glass options
- Glass is tempered safety glass without tempered logo unless otherwise specified
- Custom pattern etching also available
- Contact Element Designs for availability of other glass options in additional thicknesses

Size Limitations

- Maximum square footage = 14 sq ft
- Maximum height = 84" (2133.6 mm)
- Minimum width = 24" (609.6 mm)
- Contact Element Designs for applications exceeding these recommended maximums

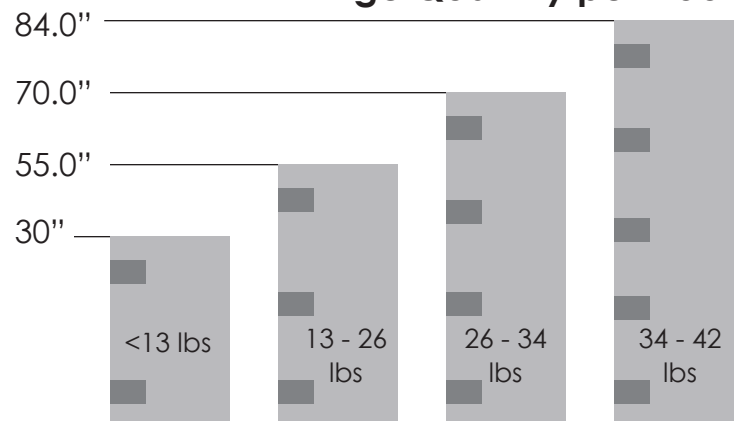
6mm Door Weight Calculator

- 6mm glass weights 3 lbs. per square foot
- Square Footage Calculation:

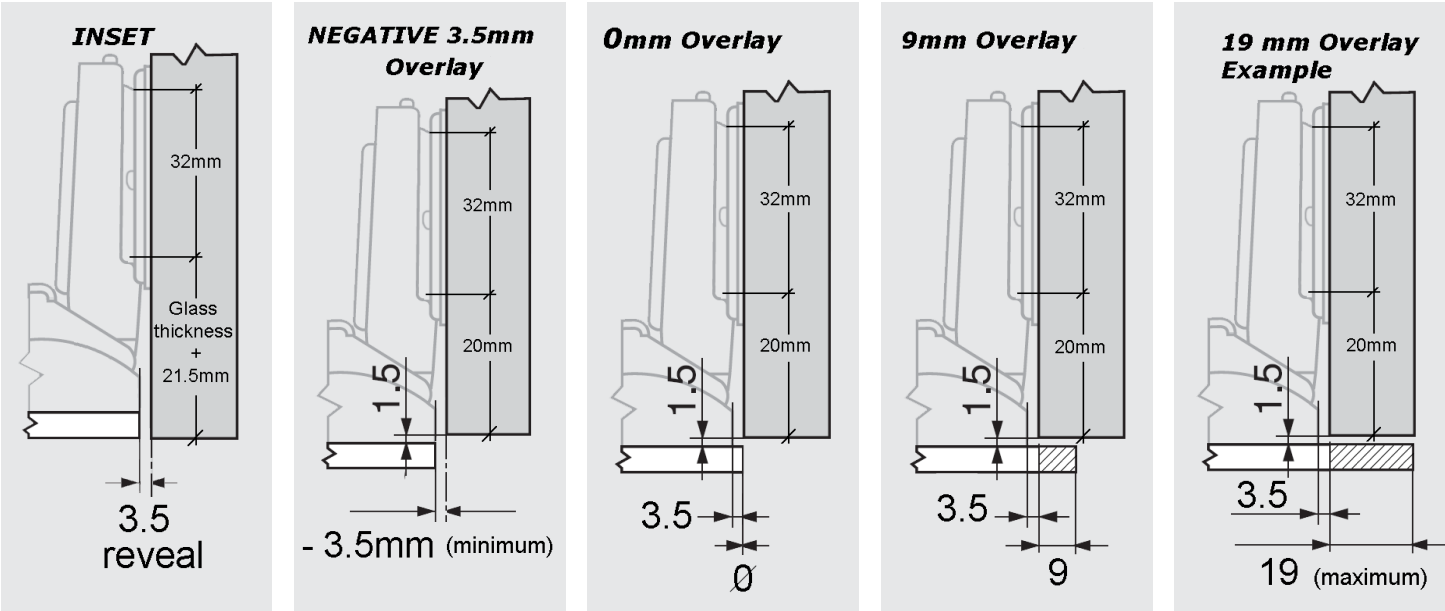
$$(H \times W) \div 144 = \text{Door SQFT}$$

$$\text{Door SQFT} \times (3) = \text{Door Weight}$$

Hinge Quantity per Door



Cabinet Specification & Overlay Dimension Examples



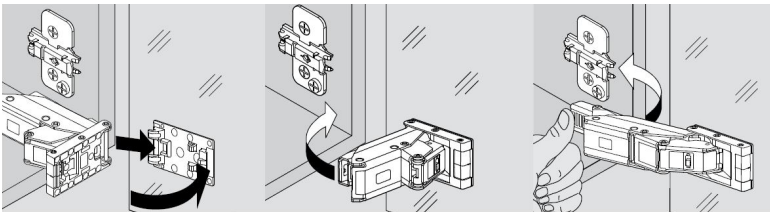
Overlay dimension can be between -3.5 and 19mm. Mounting plate setback locations based on 175H3100 mounting plate included with doors. For hinge location calculation, B = 3.5mm + Side Overlay

Door Size Calculation

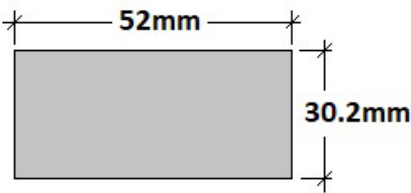


Installation Instructions

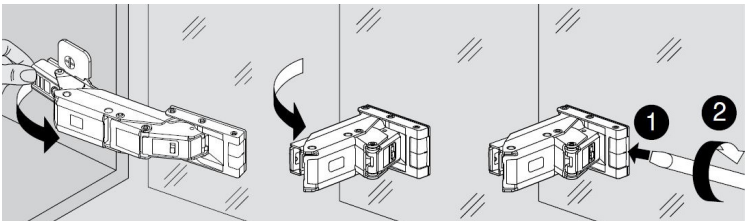
Hinge Assembly



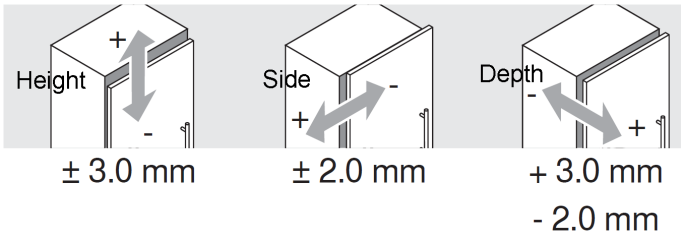
Door Plate Dimensions



Hinge Removal



Hinge Adjustment



CRISTALLO Hinge Information

- Variable 3-dimensional adjustment: Height +/- 3mm, Side +/- 2mm, Depth adjustment +3/-2 mm.
- Tool-free assembly & removal of the door on the cabinet using clip-on assembly method.
- Includes Blumotion Soft Close
- 110° opening angle
- In-line mounting plate suggested with hinge hardware
- Only available when purchased with Element Designs frameless glass doors



CRISTALLO Hinge



Ph: 877-332-3396 Fx: 704-332-3267

www.element-designs.com
info@element-designs.com

Made in the

