



Frameless Glass Doors

technical manual v7.25

Features and Benefits

Frameless glass doors by Element Designs are a clean, contemporary cabinetry or closet door solution. The doors are ideal in closet, commercial, retail, bathroom and kitchen applications, especially where full interior cabinet visibility is desired. The specially engineered glass door CRISTALLO hinges are pre-adhered to the glass by Element Designs and arrive ready to be installed as cabinet doors.

- Custom manufactured to 1/32"
- +/- 2mm tolerance
- 6mm (1/4") thick glass
- Flat polish edges
- Tempered glass for safety and durability
- Pre-installed CRISTALLO door plate
- Additional glass fabrication available
- Exclusive U.S. distributor of CRISTALLO hinges



Glass Options



- Glass is 1/4" (6mm) thick
- Etched side facing out for all satin glass options
- Glass is tempered safety glass without tempered logo unless otherwise specified
- Custom pattern etching also available
- Contact Element Designs for availability of other glass options in additional thicknesses

Size Limitations

- Maximum square footage = 14 sq ft
- Maximum height = 84" (2133.6 mm)
- Minimum width = 24" (609.6 mm)
- Contact Element Designs for applications exceeding these recommended maximums

6mm Door Weight Calculator

- 6mm glass weights 3 lbs. per square foot
- Square Footage Calculation:

$$(H \times W) \div 144 = \text{Door SQFT}$$

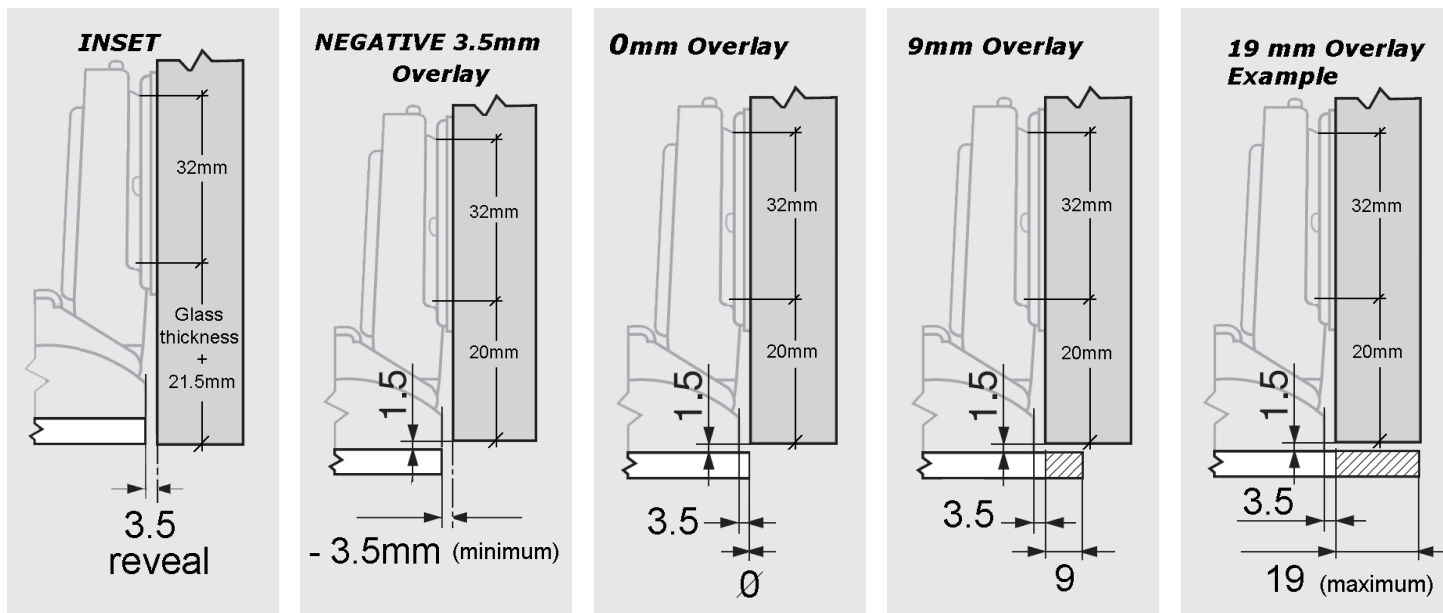
$$\text{Door SQFT} \times (3) = \text{Door Weight}$$

÷

Hinge Quantities



Cabinet Specification & Overlay Dimension Examples

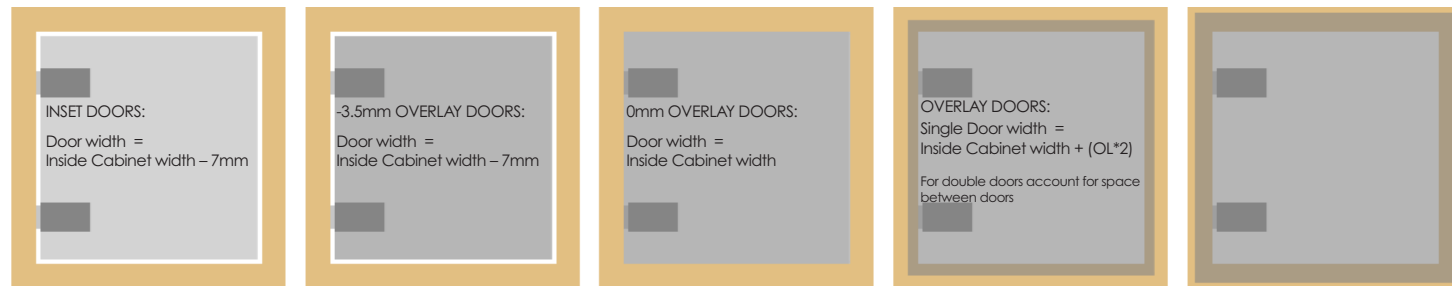


Overlay dimension can be between -3.5 and 19mm.

Mounting plate setback locations based on 175H3100 mounting plate included with doors.

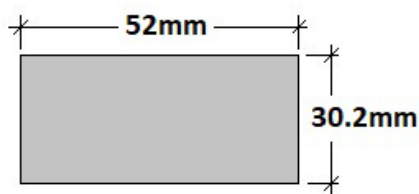
For hinge location calculation, B = 3.5mm + Side Overlay

Door Size Calculation

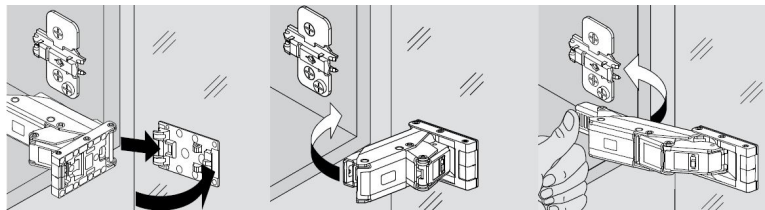


Installation Instructions

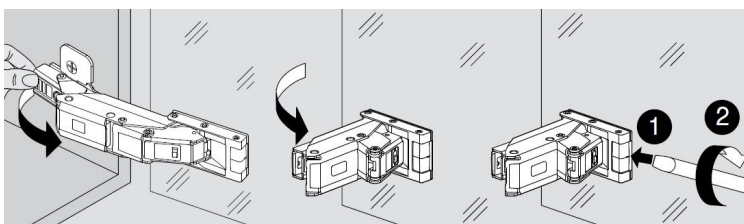
Door Plate Dimensions



Hinge Assembly



Hinge Removal



Hinge Adjustment

