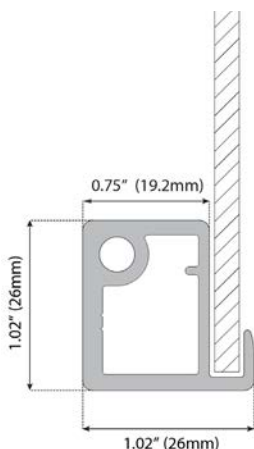




# Integrated Hinge Doors with Salice AIR Hinges Technical Manual

Profile Options .....	3
Insert Options .....	5
Decorative Hardware .....	7
Hinge Installation .....	8
Hinge Adjustment .....	9
Drilling Dimensions .....	10
Overlay Calculation .....	11
Cabinet Drilling Template .....	15
Cleaning and Care.....	16
Warranty .....	17

# AF012



## Design Guidelines:

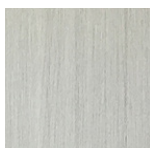
- Maximum height = 82.6875" (2100mm)
- Maximum width = 24" (610mm)
- Maximum door weight = 44 lbs (20 kg)
- Minimum height = 5.5" (139.7mm)
- Minimum width = 5.5" (139.7mm)
- Maximum square footage = 14 sf
- NOT recommended as drawer fronts or lift up doors

## Profile Finishes

### Anodized

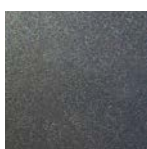


natural aluminum (N)

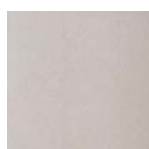


brushed stainless (S)

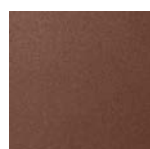
### Coated



graphite (GR)



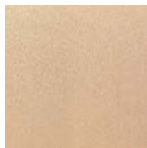
arctic silver (AS)



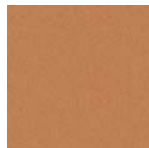
luxe bronze (LB)



chalk (CK)



gold (GLD)



copper (C)



modern brass (MB)



onyx (X)



bronze matte (BZM)



## Insert Specifications:

- 4mm (.156")
- Handle hole can NOT be drilled through the frame
- Handle hole locations must be specified at time of order if insert is tempered glass

## To Calculate Insert Size:

Insert Width = Door Width - 0.25" (6mm)

Insert Height = Door Height - 0.25" (6mm)

## Hinge Information:

Profile AF012 utilizes Salice AIR hinges.

### Finish options:

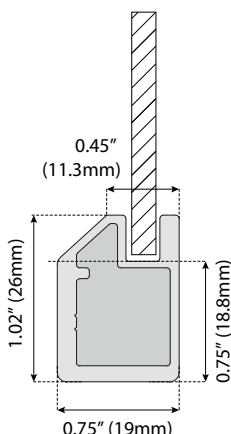
- Titanium
- Nickel

### Hinge Motion Options:

- Soft Close
- Push to Open



# AF013



## Design Guidelines:

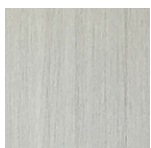
- Maximum height = 82.6875" (2100mm)
- Maximum width = 24" (610mm)
- Maximum door weight = 44 lbs (20 kg)
- Minimum height = 5.5" (139.7mm)
- Minimum width = 5.5" (139.7mm)
- Maximum square footage = 14 sf
- NOT recommended as drawer fronts or lift up doors

## Profile Finishes

### Anodized



natural aluminum (N)

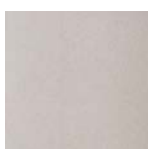


brushed stainless (S)

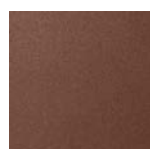
### Coated



graphite (GR)



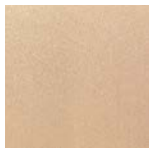
arctic silver (AS)



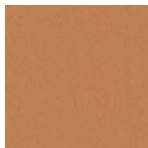
luxe bronze (LB)



chalk (CK)



gold (GLD)



copper (C)



modern brass (MB)



onyx (X)



bronze matte (BZM)



## Insert Specifications:

- 4mm (.156")
- Handle hole can be drilled through the frame
- Handle hole locations must be specified at time of order if insert is tempered glass

## To Calculate Insert Size:

Insert Width = Door Width - 1.52" (38.5mm)

Insert Height = Door Height - 1.52" (38.5mm)

## Hinge Information:

Profile AF013 utilizes Salice AIR hinges.

### Finish options:

- Titanium
- Nickel

### Hinge Motion Options:

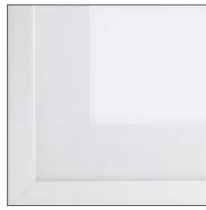
- Soft Close
- Push to Open



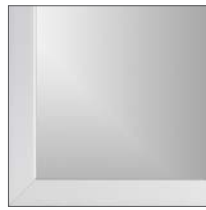
## Standard Glass



low-iron  
clear



low-iron  
satin



mirror



clear



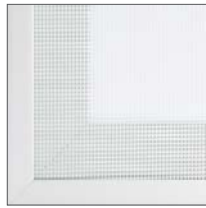
satin



grey  
clear



bronze  
clear



lstral D

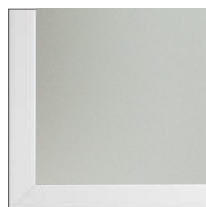


reeded

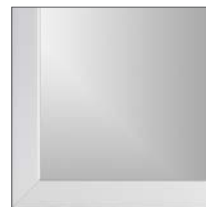
## Premium Glass



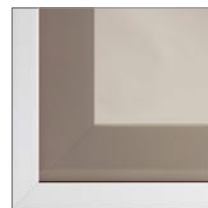
grey  
satin



grey satin  
obscure mirror



low-iron  
mirror



bronze  
satin



bronze satin  
obscure mirror



low-iron satin  
mirror

- Glass inserts are 5/32" (4mm) thick
- Etched and patterned side facing in
- Glass is tempered safety glass without a tempered logo, unless otherwise specified
- Mirror glass is not tempered, but includes safety backer
- Pattern glass options (lstral D & reeded) have max height of 84" (2133mm)

## Metallics



aluminum  
laminate



brushed  
stainless  
laminate

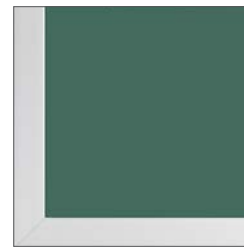


platinum  
ice  
acrylic

- Inserts are 5/32" (4mm) thick
- NOT available with AF006 or AF010

## Backpainted Glass

- High quality water based paint on low iron glass
- All glass is tempered safety glass without a tempered logo unless otherwise specified
- 177 Non-Standard and Custom colors available
- All backpainted glass has a light grey backer for added durability



non-standard color  
matte



custom color  
gloss



white  
gloss



sand  
gloss



blush  
gloss



aqua  
gloss



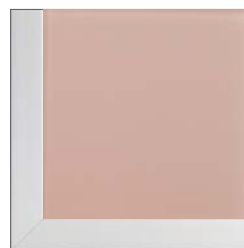
slate  
gloss



white  
matte



sand  
matte



blush  
matte



aqua  
matte



slate  
matte



black  
gloss



cream gloss



bronze  
gloss



navy  
gloss



mineral  
gloss



black  
matte



cream matte



bronze  
matte



navy  
matte



mineral  
matte

\*Images may not be exact representations of color and finish options. Contact Element Designs for samples.

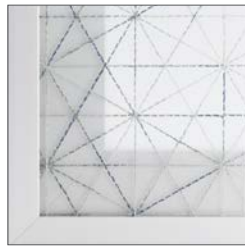


## 3form® Architectural Resin

- Inserts are 5/32" (4mm) thick with Sandstone finish on front and back
- Inserts contain organic materials and may vary in color and density



struck  
pure



starcrossed  
shadow



swept  
gold



swept  
silver



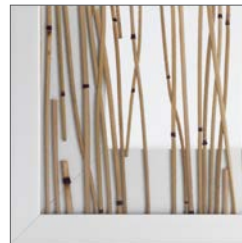
strand  
iron



wisp  
silver



quattro  
carbon



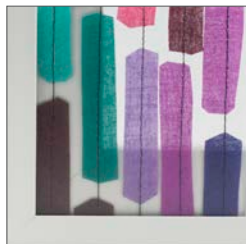
thatch



fossil  
leaf



linea  
ivory



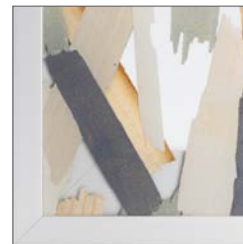
ensign



mari  
seamless



weld  
silver



kathali  
greys



glint  
gold

## High Gloss Solid Acrylic

- Not available with AF006 or AF010
- Inserts are 5/32" (4mm) thick
- Water resistant, UV and fade resistant
- Complimentary cleaner provided



alpine white



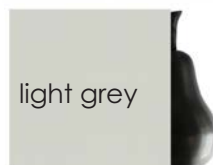
white



turquoise



cobalt blue



light grey



stone grey



anthracite



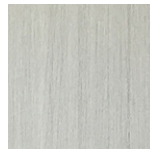
black

\*Images may not be exact representations of color and pattern options. Contact Element Designs for samples.



## Finishes

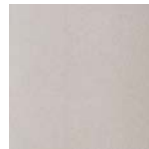
## Anodized Aluminum

natural  
aluminumbrushed  
stainless

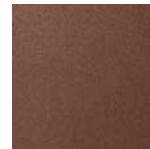
## Coated



graphite



arctic silver



luxe bronze



bronze matte



gold



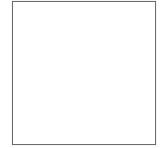
copper



modern brass



onyx



chalk

- Not all handles available in natural or brushed stainless, see below
- Knobs not available in brushed stainless

## Knobs



K001



K005



K006



K007



K008



K009

## Bar Handles

natural aluminum finish



brushed stainless steel look finish



natural available lengths:

P1-127 Length: 7 3/8" (5" c. to c.)

P1-190 Length: 9 13/16" (7 1/2" c. to c.)

P1-250 Length: 12 13/16" (9 13/16" c. to c.)

P1-380 Length: 17 5/16" (14 15/16" c. to c.)

P1-640 Length: 27 9/16" (25 3/16" c. to c.)

P1-880 Length: 37" (34 5/8" c. to c.)

brushed available lengths:

P1-76S Length: 5 5/16" (3" c. to c.)

P1-192S Length: 9 15/16" (7 9/16" c. to c.)

P1-320S Length: 15" (12 9/16" c. to c.)

## P3-42 Finger Pull

Length: 3" (2" c. to c.)

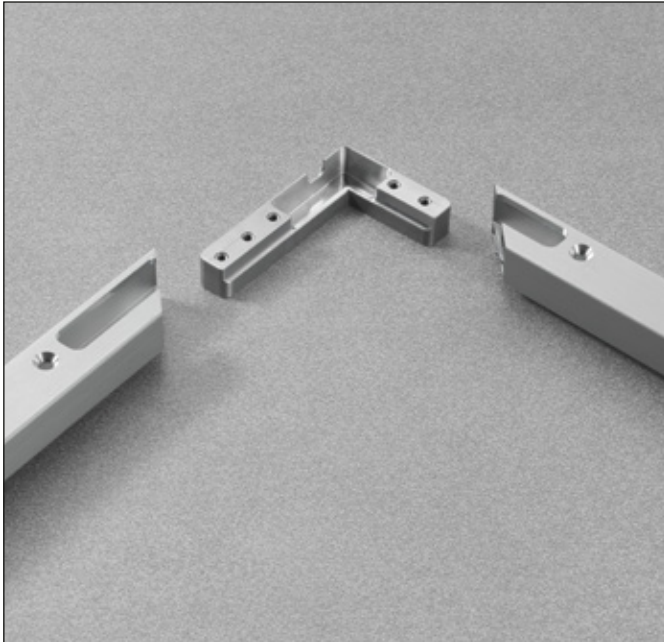


**Flush mount installation fabrication available.  
Contact Element Designs for details.**

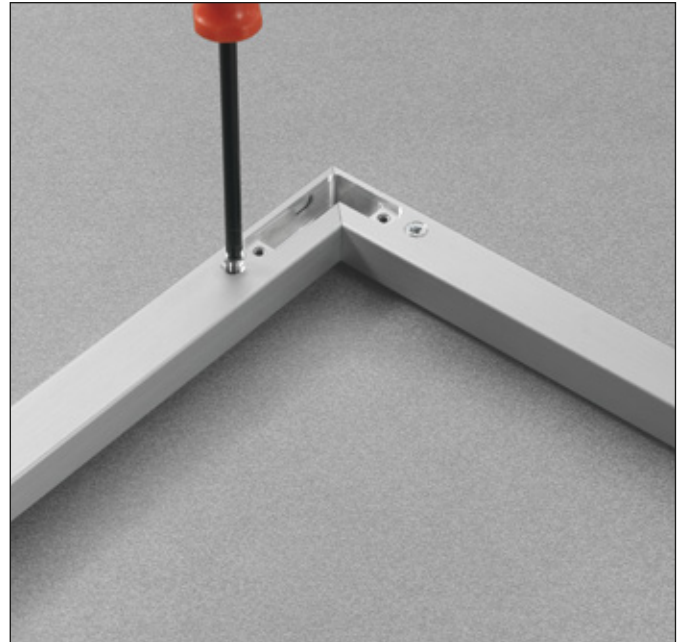


The profiles which make up the door must be cut and the ends mitred at 45°, and milled for the insertion of the corner connectors.

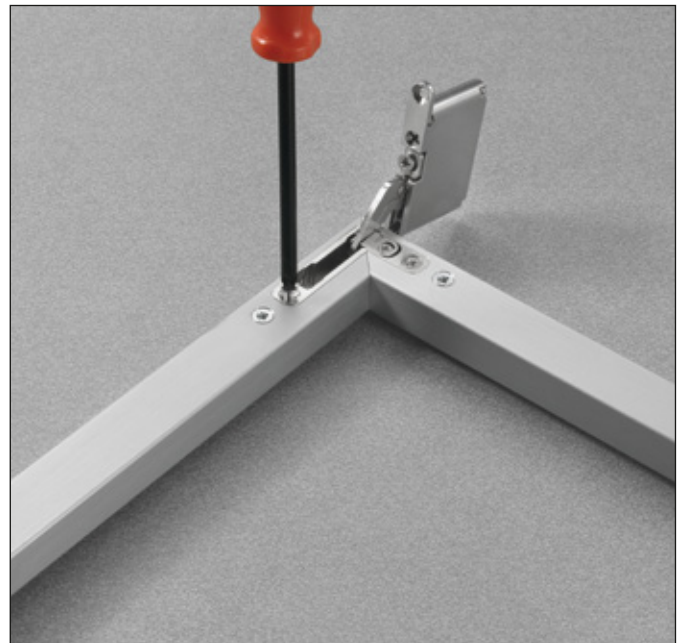
Insert the corner connectors into the profile and fix them with the screws provided.



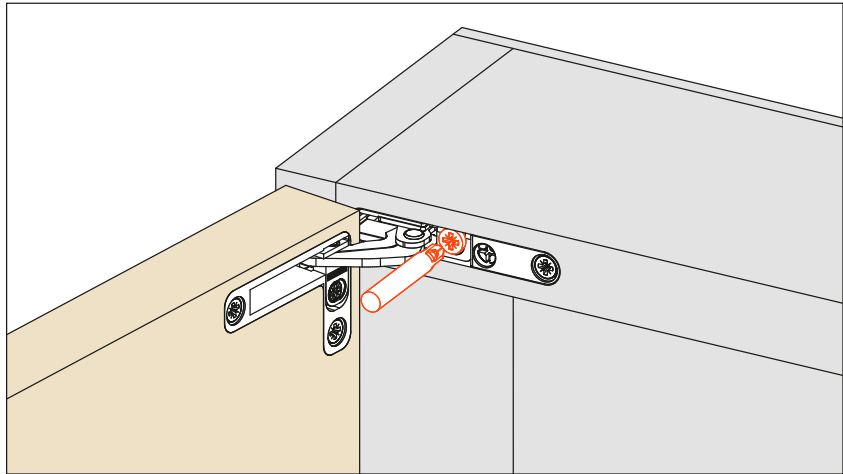
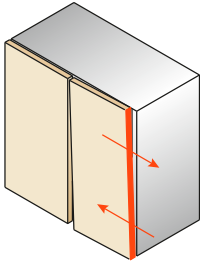
Insert the hinges into the recesses.



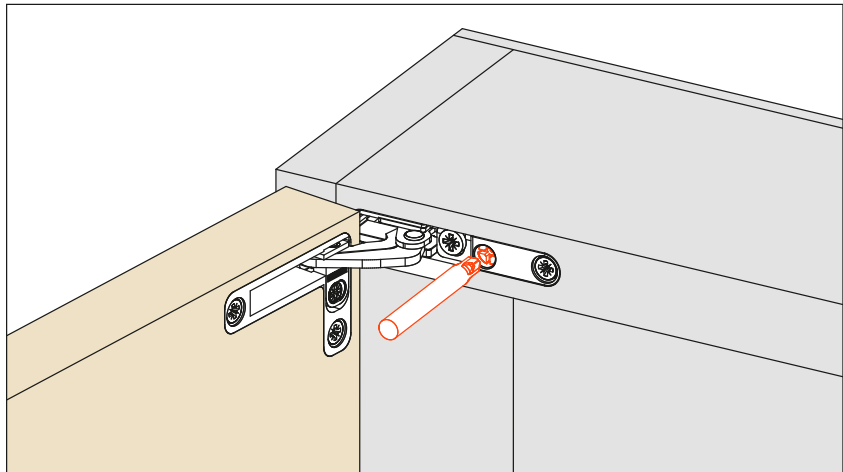
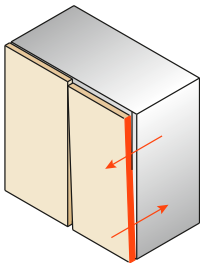
Fix with the screws provided.



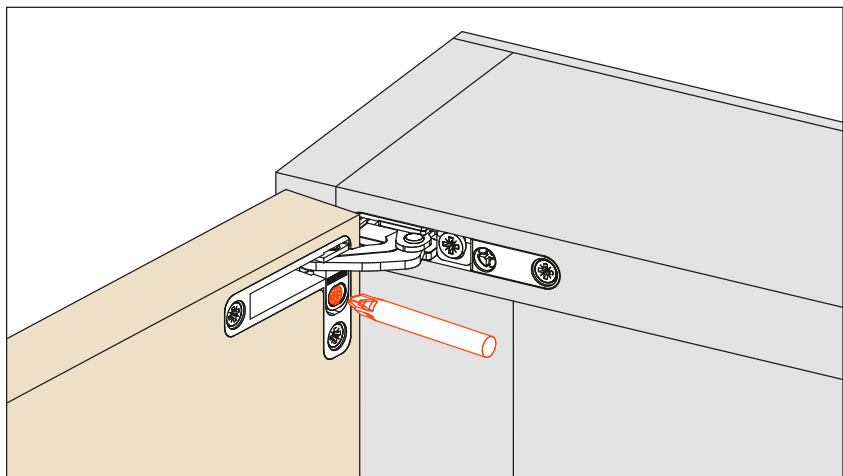
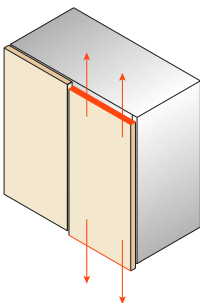
**Side adjustment range +2 to -2**



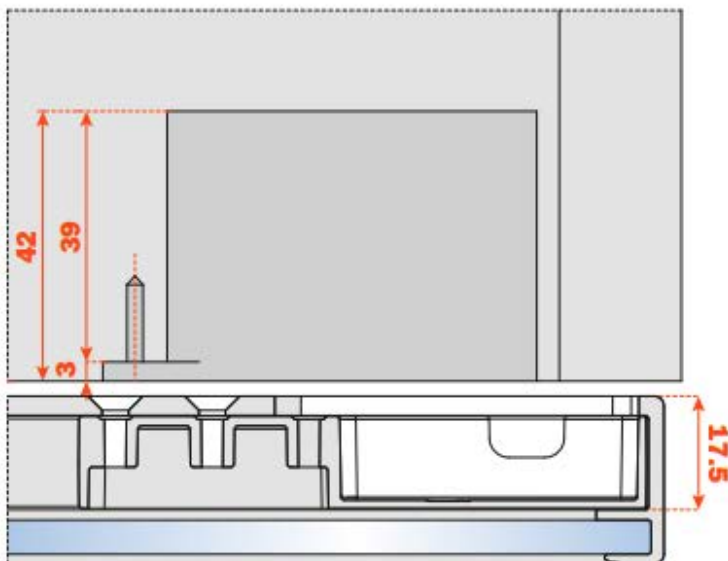
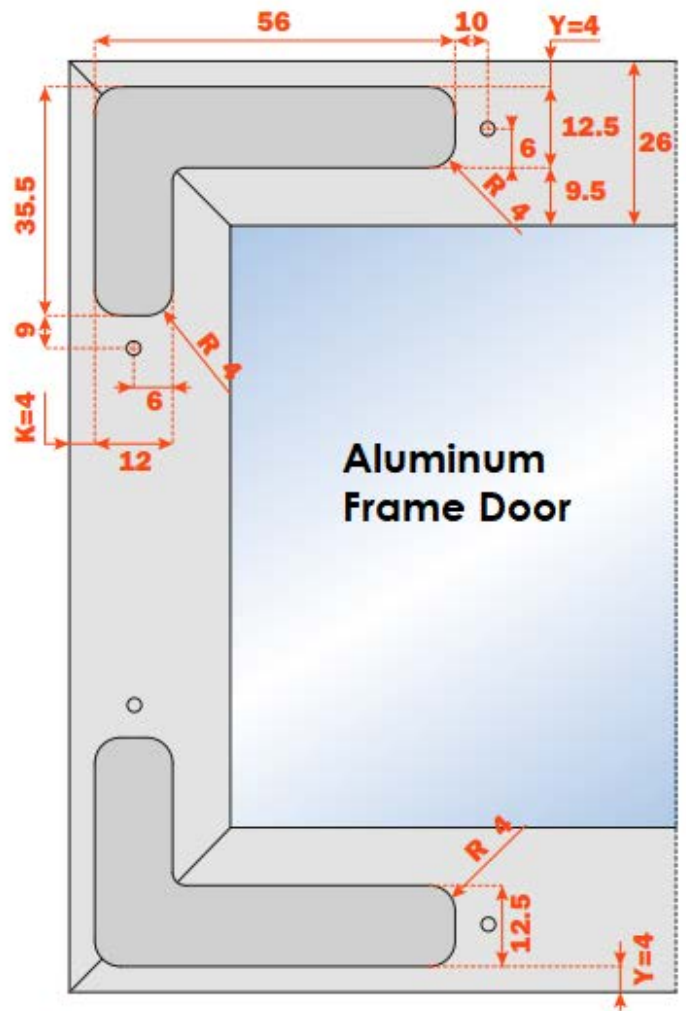
**Depth adjustment range +2 to -0.5**



**Height adjustment range +1.5 to -1.5**



Note: Always use a #2 Pozi screw driver for adjustments.



**D1 = Top Overlay (min = 16.5mm)**

**K1 (door drilling distance) = 4mm**  
(set dimension for aluminum frame doors)

K2 = top/bottom drilling distance	OVERLAY (D)
0	20.5
0.5	20
1	19.5
1.5	19
2	18.5
2.5	18
3	17.5
3.5	17
4	16.5
4.5	16
5	15.5
5.5	15
6	14.5
6.5	14
7	13.5
7.5	13
8	12.5
8.5	12
9	11.5

Max overlay is 20.5mm overlay with a K2 of 0mm

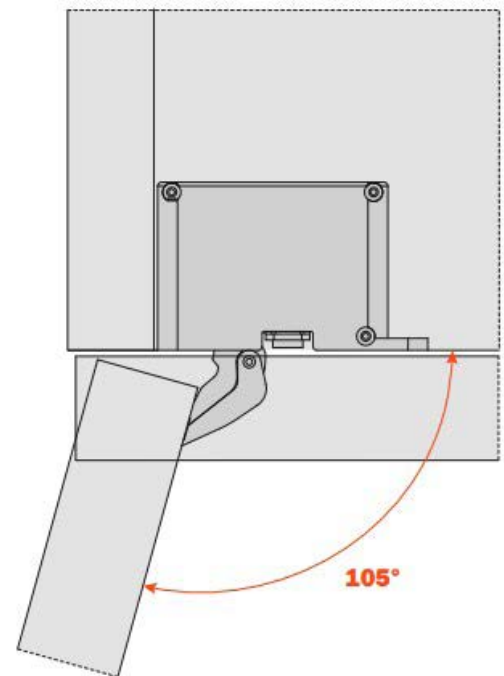
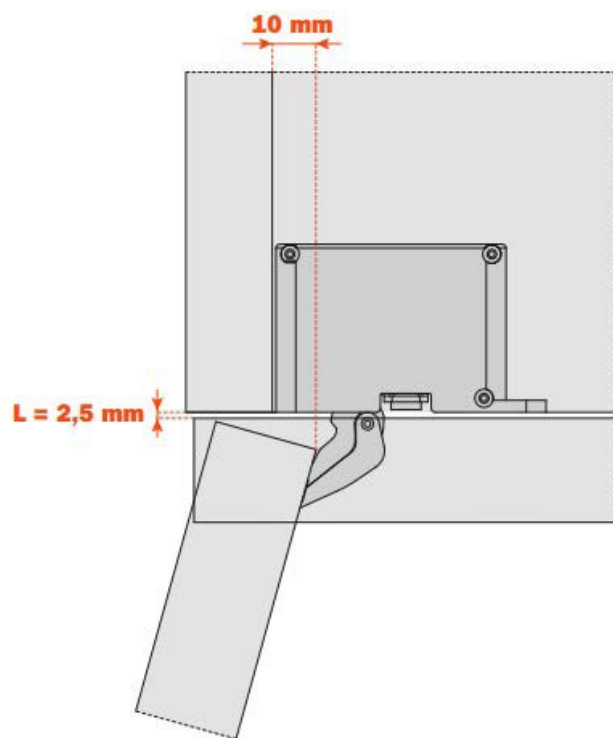
Please contact Salice America for more detailed information regarding how to use the drilling templates and set up the overlay.

NOTE: It is recommended to choose the overlay that allows the largest drilling distance (K2) for the door and panels.

**For drilling wood doors, please contact Salice for drilling distance information.**

## Projection of the door

Projection of the door from the cabinet side at the max. opening.  
The figures are based on K value = 3 and door overlay = 19 mm.





### Technical features

**Air hinges, with integrated soft close mechanism or Push self-opening system, are small and compact. They are fitted to the top and bottom panel of the cabinet.**

For min. 18 mm thick wooden doors and for aluminium-framed doors.  
Max. door weight 20 Kg.

Max. dimensions of the door : height 2100 mm, width 600 mm.

16.5 mm deep metal cup.

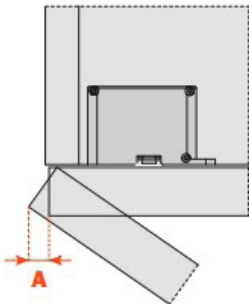
L = 2.5 mm

105° opening.

Possible drilling distance on the door (K): from 3 to 6 mm for wooden doors.

Fixed K = 4 mm for aluminium-framed doors.

### Space needed to open the door



T=	18	20	22	24	26	28	30	32
K=3 <b>A=</b>	0	0.2	0.5	0.8	2.3	4.9	7.5	10.0
K=4 <b>A=</b>	0	0.2	0.4	0.8	1.3	3.9	6.5	9.0
K=5 <b>A=</b>	0	0.2	0.4	0.8	1.3	2.9	5.5	8.0
K=6 <b>A=</b>	0	0.2	0.4	0.8	1.2	1.9	4.5	7.0

**The above values are calculated on the assumption that the doors have square edges. They are reduced if the doors have radiussed edges.**



A template set is available for purchase to aid in the drilling of the holes in the cabinet box for the Salice AIR hinge, and in depth directions and “how to” videos on a USB drive are included in the set. Images and descriptions of the set contents are below. A router is needed to drill the holes.



- (2) Short “U” shaped aluminum channels used as stop bars.
- (4) Long aluminum channel guide rails.
- (2) Large black templates (1R & 1L).
- (1) Hardware package
- (1) Whiteside Tool pack



Whiteside 10 mm dia., spiral up-cut router bit and 3/4" dia. brass guide bushing.



Hardware package which includes:

- (2) Allen wrenches, (8) round head machine screws & washers, (2) flat head machine screws, (8) flat channel nuts for long guide rails, (2) flat channel nuts for small aluminum stop bars and (4) ring pins.

To insure proper cleaning and care of your product, please follow these simple suggestions for our materials:

### Glass (gloss or satin surfaces)

We recommend using 99% isopropyl alcohol, citrus or vinegar based cleaners on a clean, non-abrasive cloth or paper towel. If a heavy stain is present and does not come clean using the suggestions above, use isopropyl alcohol with a Magic Eraser by gently scrubbing until the mark is removed.

### Backpainted Glass

Follow instructions above for the gloss and/or satin surface of the glass, opposite the painted side. For the backpainted water based coating, we recommend using a mildly damp (water only) on a non-abrasive cloth to gently clean the coated side of the glass.

### Aluminum Extrusions

Use a clean cloth with a mild detergent to clean the aluminum.

NEVER use an abrasive cleaning pads such as a metallic sponge, solvents, strong detergents or other chemical agents when cleaning glass or aluminum.

Element Designs' aluminum frame cabinet door products are covered by a limited liability warranty from defects in material and workmanship over the functional lifetime of the doors. The warranty includes any defects in the fabricated door size, boring locations, aluminum framing flaws outside of quality standards, and glass imperfections outside of quality standards. Element Designs also warrants its doors from deterioration, discoloring, degrading, or overall changing through the course of the product's lifetime. This warranty does not apply if, in the judgment of Element Designs, the product fails due to damage from shipment, handling, storage, accident, abuse or misuse, or if it has been used or maintained in a manner not conforming to product's care instructions, has been modified in any way, or has been defaced. Repair by anyone other than Element Designs or an approved agent voids this warranty. The maximum liability of Element Designs is the product purchase price.

